

# ENROUTE+

Fast, professional and attentive service

## BETTER SERVICE, ALWAYS ENROUTE

### ◇ Genuine Parts Supply



- 11 parts distribution centers, 92 forward warehouses
- 15 years of genuine parts supply expertise
- 1-year warranty for assembled parts (see Note for details)
- Over 50,000 types of parts, with a stock value of \$48 million

### ◇ Global Network



- 3 self-operated stations
- 56 mobile service teams
- 337 authorized stations
- Covering 112 key markets

### ◇ Intelligent Service Platform



- Link + platform for one-click repairs
- 100% transparent service
- Online quick access to service materials

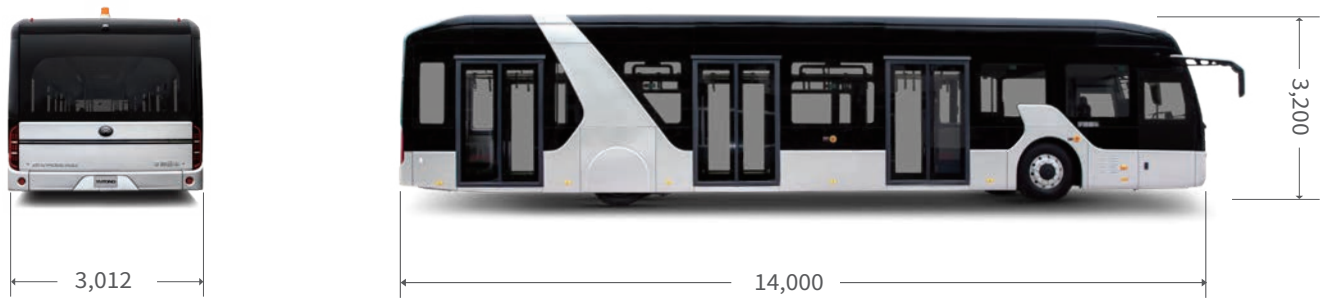
### ◇ Professional Direct Service Guarantee



- 647 professionals of global direct service team
- 365-day on-site presence
- 72-hour resolution for common issues under warranty
- Customized service solutions to ensure comprehensive support

Note: Applies to engine, transmission, and axle assemblies purchased through Yutong channels and installed by Yutong service stations, authorized outlets, or Yutong employees.

# TECHNICAL SPECIFICATIONS



ITEM	STANDARD
Length * width * height (mm)	14,000*3,012*3,200
Total mass (kg)	13,000
Minimum turning diameter(m)	27
Maximum passenger capacity	Up to 114
Battery	Lithium iron phosphate battery
Traction motor	Permanent magnet synchronous motor
Charging mode	Support dual-gun fast charging
Suspension	Air suspension ECAS (2 front airbags and 4 rear airbags)
Brake	Front disc and rear disc, dual-circuit air brake
Passenger door	Three sets of pneumatic double-leaf swing door (with anti-clamping function) on each side
Air conditioning	High-efficiency electric A/C
Driver seat	3-point airbag shock-absorbing seat
Handbrake	EPB
Driver window	Electric window
Seats	8+1+1
Layout of seats	



Yutong Bus Co., Ltd.

Yutong Marketing Center, Economic and Technological Development Zone, Zhengzhou, China Tel: +86 371 6671 8999 Website: [www.yutong.com](http://www.yutong.com)  
E-mail: [sales@yutong.com](mailto:sales@yutong.com) Follow us on Facebook & Twitter & YouTube at Yutong Bus & Coach. The images may include items of optional equipment and accessories that are not installed as standard. The product is subject to technical improvement. Yutong reserves the right to change product specifications without prior notice. All rights reserved. MAY, 2025 Edition.



YUTONG

AB14E

PROFESSIONAL ELECTRIC AIRPORT BUS BENCHMARK



# Green airport

Starting with Yutong electric airport bus



## Green Energy

### 100% electric drive, 100% comfort

- Zero-emission cabin with no exhaust pollution in airport zones, ensuring healthier air for passengers.
- Quiet comfort area with noise levels far below diesel vehicles, creating library-level tranquility.



## Intelligent Protection

### Link+ for more efficient operations!

- Vehicle management: real-time fault monitoring, precise energy consumption tracking, maintenance planning, and repair management to enhance vehicle management efficiency.
- Fleet management: route planning, vehicle scheduling, and dispatch scheduling to optimize fleet management efficiency.

### More intelligent human-machine interaction(HMI)

- Standard configuration with driver behavior detection, automatically identifying abnormal pedal operation.
- Door-open prevention: The vehicle won't start if passenger doors aren't fully closed.
- Equipped with collision warning sensors, voice assistant, Carbit connectivity, smartphone screen mirroring and OTA-upgradable instrument cluster to keep the vehicle more user-friendly.

## Efficient Operation

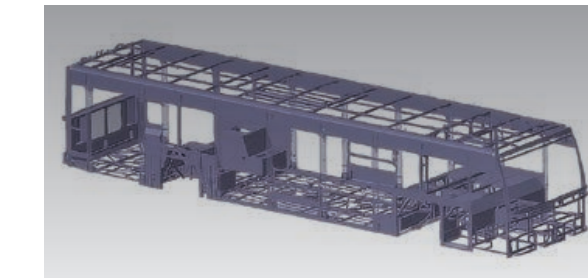
- **Faster charging:** The dual-gun independent charging technology delivers up to 600A current, enabling fast charging with high compatibility across charging stations. Achieves 12% to 100% charge in just 2 hours.
- **High efficiency motor:** Permanent magnet synchronous motors maintain over 90% energy conversion efficiency across wide speed and load ranges.
- **High energy density battery:** Reduced size and weight lowers energy consumption.

Four battery options (176-352 kWh) to meet varying range requirements.



## Safety & Reliability

High battery safety standards with vehicle main structural components designed for 20 years/2 million km operation.



- All-aluminum vehicle body with over 25-year corrosion resistance for the frame and over 15-year for the entire vehicle.
- Yutong's exclusive battery nitrogen protection system prevents fire and explosions.
- IP68+IP6K9K high safety protection level resistant to 24h water immersion; flame-resistant battery pack ensures 2h burn-through protection during extreme thermal runaway.
- Battery system features liquid cooling/heating technology with strong adaptability to various conditions.
- 24h all-weather monitoring system.

Highly reliable five-in-one electric control system; battery pack tested with 63h continuous vibration; structural strength matches vehicle lifespan for stable operation.

Traction motor features anti-mud and anti-condensation design with flame-retardant non-metallic materials and 8-year maintenance-free bearings and seals, saving 1 hour daily on upkeep.