



Yutong Bus Co., Ltd.

Yutong Marketing Center, Economic and Technological Development Zone, Zhengzhou, China, Tel: +86 371 6671 8999 Website: [www.yutong.com](http://www.yutong.com) E-mail: [sales@yutong.com](mailto:sales@yutong.com) Follow us on Facebook & Twitter & YouTube at Yutong Bus & Coach

The images may include items of optional equipment and accessories that are not installed as standard. The product is subject to technical improvement. Yutong reserves the right to change product specifications without prior notice. All rights reserved. April, 2021 Edition.



# T12

WITH T12, NO MORE EXPECTATIONS





# YUTONG

## Better bus, better life

As a leading bus manufacturer, Yutong buses are everywhere where transport companies demand the best! Since 1963, Yutong has been manufacturing buses and coaches that travel many roads on the planet. Realizing a sizable sales volume in over 30 countries and regions, Yutong buses are recognized by every transport professional who looks for not only exceptional quality but also before- and after-sales services, and are capable of meeting all of their requirements.

Sold to more than **30** countries and regions in batch

Annual sales exceed **70,000** units

Vehicle length is **5~18** meters

Drive **43 billion** kilometers per year

Carry **52 billion** passengers per year



## Yutong quality

Judge for yourself after the first million kilometers!

As a professional in the business of transporting people, you know better than anyone that the quality of a coach or a bus can only be truly assessed after undergoing the test of the road and time. Based on this intangible principle, we conceive and build carefully designed vehicles with the best in equipment and facilities, which meet your actual needs and are capable of improving the long-term profitability of your business.



# Standing out with appearance and performances

As a latest high-end tourist coach developed by Yutong, T12 boasts elegant style with streamlined design, which stands out among its counterparts. The ergonomic passenger compartment layout and design, telematics and a number of intelligent systems improve the overall quality of whole vehicles. The core components with world renowned brands ensure the handling, comfort, safety and reliability of whole vehicles, making T12 different from other coaches.



# T12





## Appearance really matters

The outstanding design forms the elegance of T12, and the LED headlamps add extra luster to the whole vehicle.

- The design of T12 combines the tough style of Northern Europe and soft style of Southern Europe together, and the waterfall-like streamlines and the gorgeous silver color create a smart, elegant and splendid appearance.
- The LED headlamps embedded in the front of the vehicle feature luxury style and bring more aesthetics to the whole vehicle. (optional)

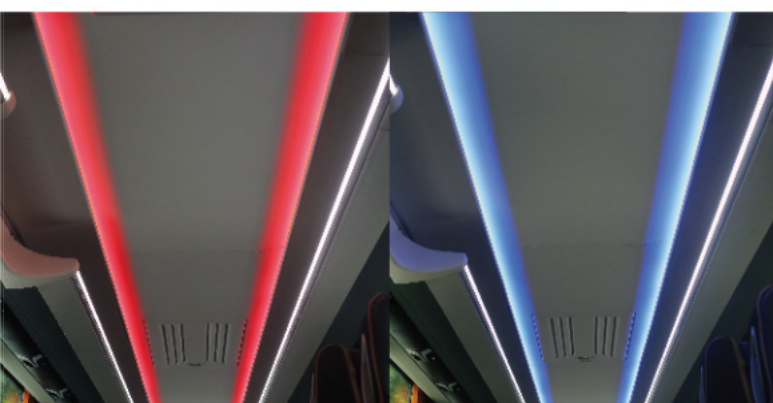






# Pleasant journey with good ride comfort

From the layout of the interior space to the use of ergonomic seat design, from the lighting, entertainment devices to the temperature control system, all the designs are human-oriented so as to create a comfortable ride experience for passengers.



Color-changing interior atmosphere lights and reading lights make the passenger compartment at night more colorful and enable passengers to feel more comfortable as well.



Partition control of the entertainment system and BOSCH system can meet various needs of passengers and make them more relaxed.

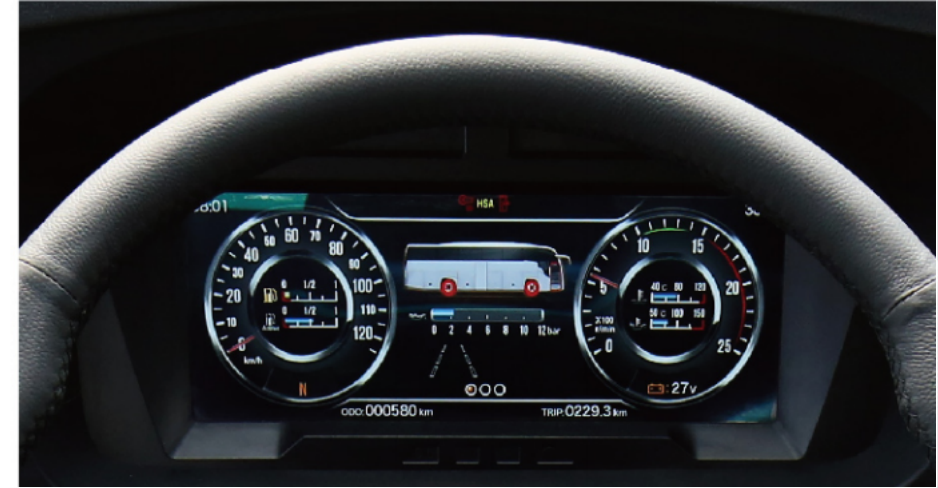


Spheros air conditioner and heaters can not only achieve the quick cooling and heating functions, but also realize the automatic temperature control



The seats fitting the body curve and the adjustable headrest can perfectly support the head, shoulder and waist, allowing passengers to have a more comfortable ride. The tray tables mounted on the back of the front seat meet the different needs of passengers.





## Easy handling and driving

Rational layout of driver's area featuring passenger car style are provided with a number of intelligent systems to ensure the convenience and comfort of the driver's area and make the driving more relaxed.

- The 12-inch LCD instrument with adaptive brightness adjustment function shows the information clearly and legibly, which is easy to be handled.
- The driver seat has damping function and can be moved forward. In addition, the backrest is provided with waist support and side waist support, and its surface can be adjusted to ensure that drivers have the most relaxed and comfortable driving status.
- The keyless push-button start system, multi-functional steering wheel, integrated shift switch, electric lifting and driver window with electric defrosting function enable the driver to have an effortless handling of the vehicle.



# Well-designed specification ensures the reliability

Carefully selected core components and spare parts from world renowned brands with longer maintenance interval enable the whole vehicles to have better safety and reliability.

- The ZF front and rear axles with air suspension, Goodyear 295/80R22.5 tires, DAF engine and ZF gearbox feature robust power performance, lower fuel consumption and better trafficability and stability.
- Multiple protections such as electronic control system (EBS), electronic stability program (ESP), advanced emergency braking system (AEBS), lane departure warning system (LDWS) and adaptive cruise system (ACC), make the driving more safely and relieved.
- Longer maintenance intervals ensure the high reliability and availability of whole vehicles.



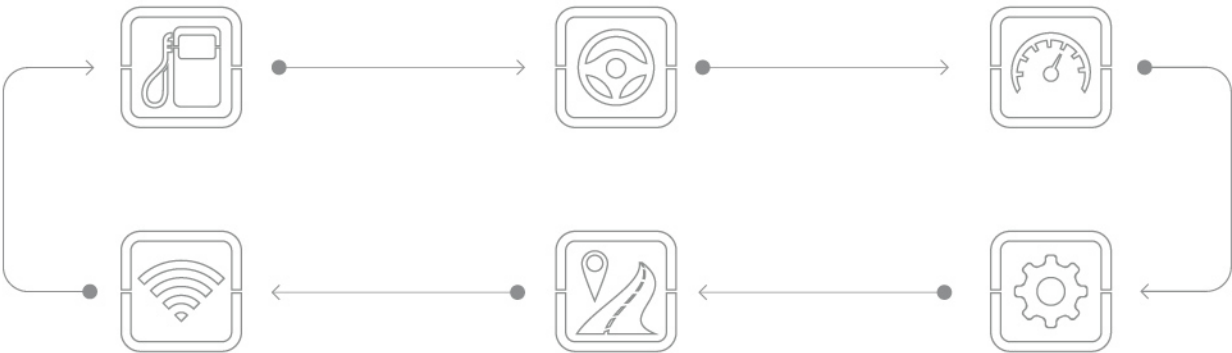




# Smart technology facilitates the management

Yutong's innovation in the field of intelligent transport is leading the industry's new direction. The telematics technology of T12 is based on the good grasp of vehicles and people's needs, and closely connects the network and vehicles together to conduct the overall management anywhere and anytime.

- Full coverage of remote failure diagnosis: determine the best solutions through the database, thus making the repair more convenient.
- Check the failure information via mobile phones anywhere at any time, thus facilitating the diagnosis.
- Fleet management function: helpful for the analysis and improvement of driving habits, and reviewing the whole process of failure handling.

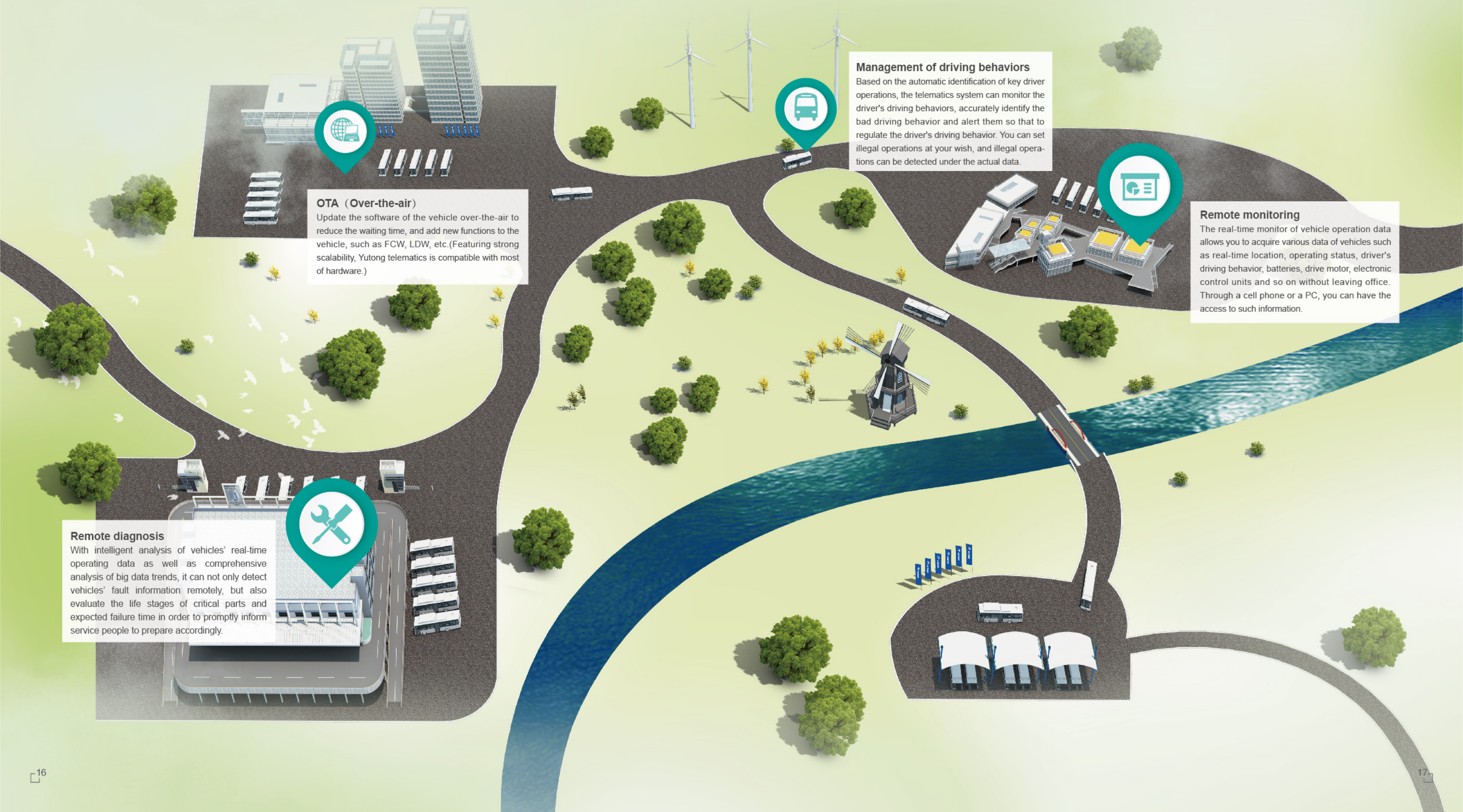




# Control your vehicles in far distance

\* "Vehicle+" is an optional function of the vehicle. If you want to know more about it, just feel free to contact us.

Yutong has developed the telematics system (Vehicle+), which has remote monitoring function and can monitor the status of vehicle operation in real time, allowing you to acquire a variety of vehicle data without leaving office and providing strong support for the management of your fleet.



## OTA (Over-the-air)

Update the software of the vehicle over-the-air to reduce the waiting time, and add new functions to the vehicle, such as FCW, LDW, etc.(Featuring strong scalability, Yutong telematics is compatible with most of hardware.)

## Management of driving behaviors

Based on the automatic identification of key driver operations, the telematics system can monitor the driver's driving behaviors, accurately identify the bad driving behavior and alert them so that to regulate the driver's driving behavior. You can set illegal operations at your wish, and illegal operations can be detected under the actual data.

## Remote monitoring

The real-time monitor of vehicle operation data allows you to acquire various data of vehicles such as real-time location, operating status, driver's driving behavior, batteries, drive motor, electronic control units and so on without leaving office. Through a cell phone or a PC, you can have the access to such information.

## Remote diagnosis

With intelligent analysis of vehicles' real-time operating data as well as comprehensive analysis of big data trends, it can not only detect vehicles' fault information remotely, but also evaluate the life stages of critical parts and expected failure time in order to promptly inform service people to prepare accordingly.





## VEHICLE SPECIFICATIONS (mm)



# T<sub>12</sub>

### SPECIFICATION

Overall length*width*height (mm)	12245*2550*3810
Wheelbase (mm)	6090
Min. turning diameter (m)	<18.5
Model	DAF MX-11 330 H3
Rated power(kw/rpm)	330/1600
Rated torque(Nm/rpm)	2300/900-1125
Tank capacity(L)	520
Displacement(L)	10.8
Emission	Euro VI
Gearbox	ZF6AP2300BC
Front axle	ZF independent axle, 7.5 tons, disc brake
Rear axle	ZF rear axle, 13 tons, disc brake, final ratio 3.54
Brake system	WABCO AEBS, ESC
Steering system	BOSCH8098 integral power steering, multi-functional steering wheel with self-locking
Suspension	Air suspension, front & rear anti-roll bar
Tyre	295/80R22.5
Air conditioner(A/C)	Spheros Revo Global 400 roof mounted air conditioning (30,000Kcal/h), BOCK compressor.
Seats	53+1+1 / 49+1+1 / 48+1+1



53+1+1+Toilet